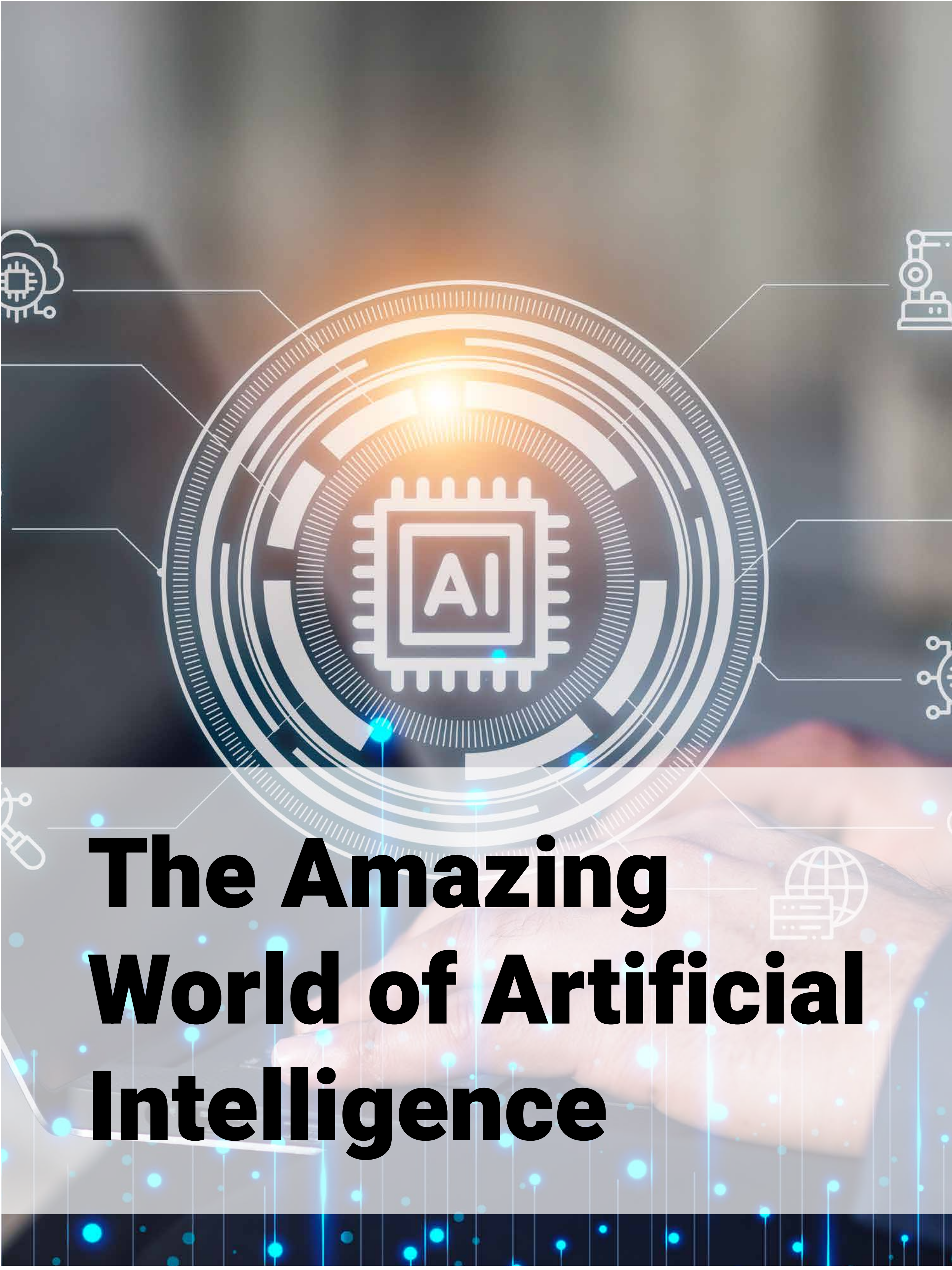


Reading



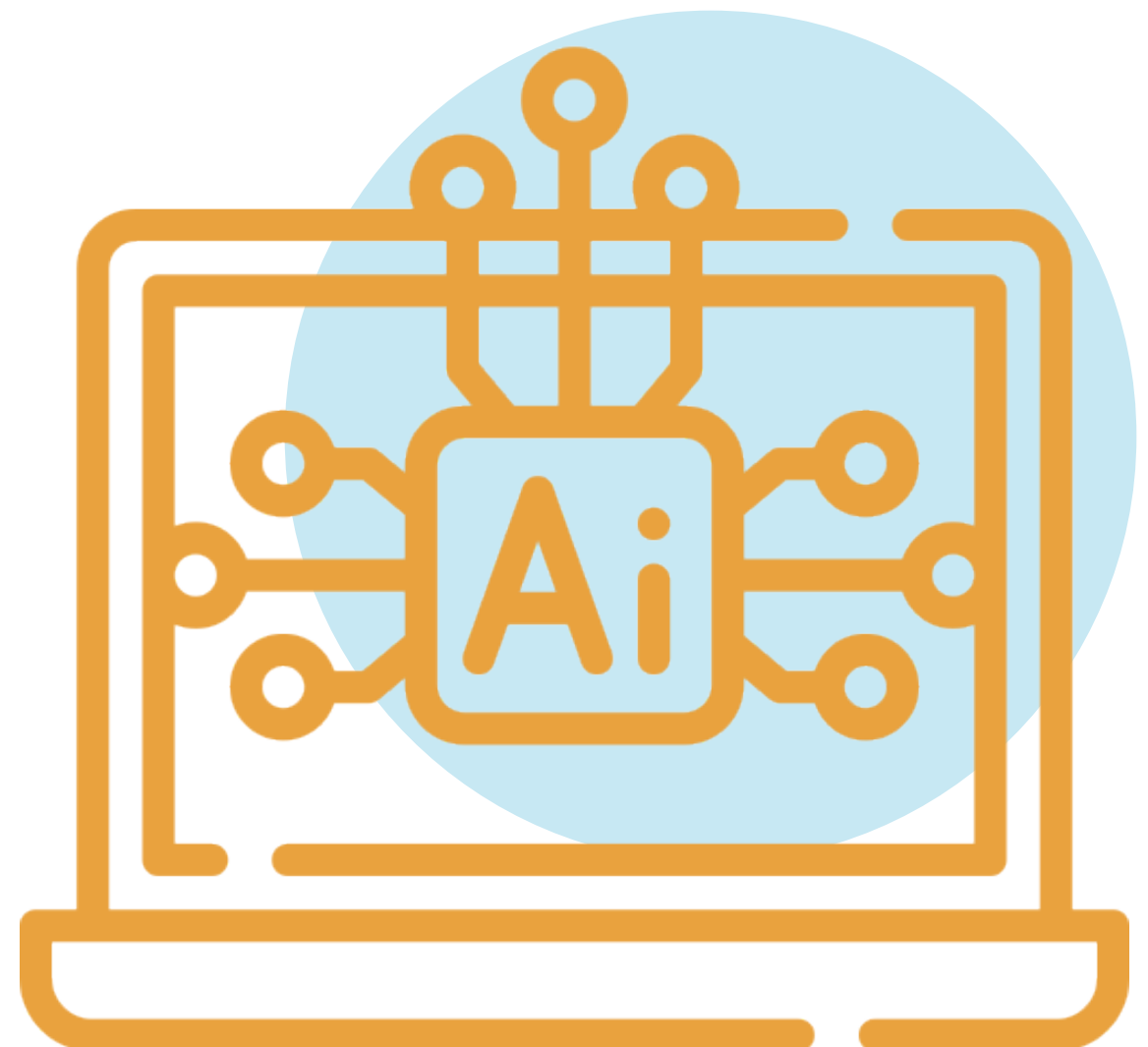
The Amazing World of Artificial Intelligence

The Amazing World of Artificial Intelligence

Artificial Intelligence (AI) is one of the most exciting and rapidly evolving fields in technology today. At its core, AI involves the development of computer systems that can perform tasks that would normally require human intelligence. From speech recognition, and language translation to decision-making, and pattern recognition, the possibilities of AI are almost endless. But what exactly is AI, and how does it work? In this article, we'll take a journey into the amazing world of AI and explore some of its most fascinating aspects.

Fact 1: What is AI?

AI refers to the development of computer systems that can perform tasks that would normally require human intelligence. These tasks might include recognizing speech, translating languages, or making decisions based on complex data. At its core, AI is all about teaching computers to think, and learn like humans, using a combination of algorithms, and data to analyze, and interpret information.



Fact 2: The History of AI

AI has a long and fascinating history, dating back more than 50 years. Early developments in AI included the first chess-playing computer program in 1951, and the first AI program that could converse with humans in natural language in the 1960s. Since then, AI has continued to evolve and grow, with new breakthroughs in machine learning, natural language processing, and other areas.

Fact 3: Applications of AI

Today, AI is used in a wide range of applications, from virtual personal assistants like Siri and Alexa to facial recognition technology, self-driving cars, and medical diagnosis. In fact, AI is transforming many industries, from finance, and healthcare to manufacturing, and transportation. As technology continues to evolve, we can expect to see even more exciting applications in the years to come.

Fact 4: Types of AI

There are two main types of AI: narrow or weak AI, which is designed to perform a specific task or set of tasks, and general or strong AI, which would have the ability to perform any intellectual task that a human can. While narrow AI is already in use in many applications, the development of general AI is still a long way off.

Fact 5: Ethical Concerns

While AI has the potential to bring many benefits, such as increased efficiency, and accuracy in decision-making, it also raises ethical concerns around issues such as job displacement, bias in decision-making, and control over the technology. As AI continues to evolve, and become more pervasive, it will be important for society to grapple with these issues, and ensure that the technology is used in responsible, and ethical ways.

In conclusion, AI is a complex, and fascinating field that has the potential to transform many aspects of our lives. By understanding the basics of how AI works, and how it's being used today, we can prepare ourselves for the exciting changes that lie ahead. Who knows, maybe one day we'll even have robots as friends!

Taken from:

<https://medium.com/my-journey-to-the-cloud/the-amazing-world-of-artificial-intelligence-3fa0513decde>