

Socialize vocabulary about the reading below

Ethical Considerations of Artificial Intelligence

Artificial Intelligence (AI)

Refers to the simulation of human intelligence in machines programmed to think and mimic human actions, often involving technologies such as machine learning and natural language processing.



Machine Learning (ML)

A subset of AI that enables systems to automatically learn and improve from experience without being explicitly programmed. It involves algorithms that allow computers to identify patterns and make decisions based on data.



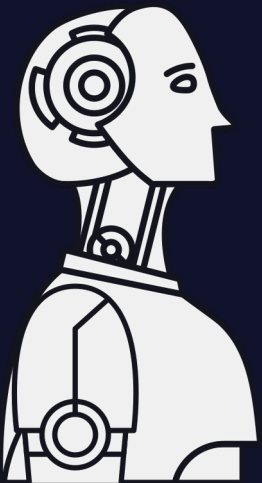
Natural Language Processing (NLP)

A field of AI that focuses on the interaction between computers and humans through natural language. It involves the ability of machines to understand, interpret, and generate human language.



Ethical Considerations

In the context of AI, these are reflections on moral principles and values associated with the development, deployment, and impact of AI technologies. They encompass issues like fairness, privacy, transparency, and avoiding biases.



Facial Recognition Technology

A technology that uses facial features to identify and verify individuals. It raises ethical concerns due to potential biases, inaccuracies, and privacy issues, particularly in criminal justice applications.

