

Pre-reading: Socialize vocabulary about the reading

"Future of AI (Artificial Intelligence): What lies ahead?"

1. Artificial Intelligence (AI)

AI is a field of computer science dedicated to creating intelligent machines capable of performing tasks associated with human intelligence. It involves machines or computer-controlled robots executing tasks traditionally linked to human intelligence.



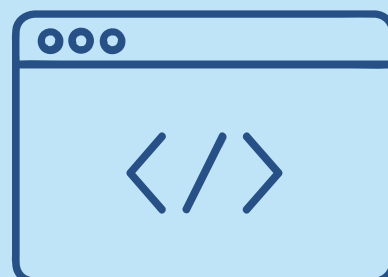
2. Narrow AI



Narrow AI refers to artificial intelligence that is capable of intelligently accomplishing specific tasks. It is currently in a restricted stage and can perform well-defined functions such as voice recognition and self-driving automobiles.

3. General AI (AGI)

Artificial General Intelligence, or AGI, refers to machines that can mimic human intelligence. It is a level of AI where machines possess cognitive abilities similar to humans.



4. Super AI

Super AI refers to self-aware AI with cognitive capacities superior to humans. It implies machines with the ability to perform any task that a human can. Super AI represents a highly advanced form of artificial intelligence.



5. Scanning Strategy

The scanning strategy is a reading technique where individuals quickly skim through a text to identify specific information or gain a general overview without reading every word in detail. It involves focusing on keywords, headings, and visually distinct elements to efficiently extract relevant information.

