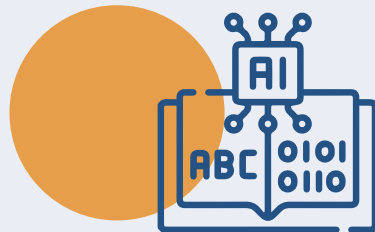


Reinforcement Learning (RL):

Reinforcement Learning is a type of machine learning where an agent learns to make decisions by interacting with an environment. The agent receives feedback in the form of rewards or penalties based on the actions it takes in the environment, and its goal is to maximize the cumulative reward over time.



Project Directory Structure:

The organization and layout of folders and files within a project. A well-structured project directory makes it easy to navigate and manage different elements such as data, models, logs, scripts, and more.



Cookiecutter:

Cookiecutter is a tool that provides a template for creating project directory structures. It helps maintain consistency and best practices across projects by generating a standardized layout.



Neptune (Experiment Tracking):

it is a tool for tracking and managing machine learning experiments. It helps monitor and log various aspects of experiments, such as hyperparameters, inference time, gains over baselines, and comments, providing insights into the model's performance.

RL Libraries (e.g., Tensorforce, Stable Baselines, RL_Coach):

They are frameworks or collections of tools that facilitate the implementation of reinforcement learning algorithms. Examples include Tensorforce, Stable Baselines, and RL_Coach, which offer a range of algorithms and resources for training RL agents.

