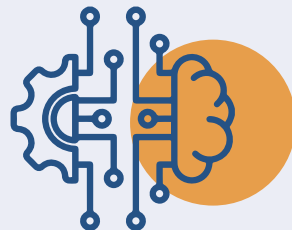


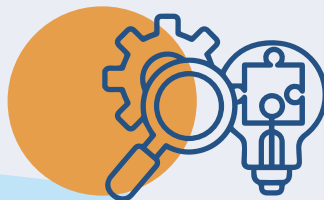
## Reinforcement learning:

A type of machine learning where an agent learns to make decisions by interacting with an environment and receiving feedback in the form of rewards or punishments.



## Agent:

The entity that makes decisions and takes actions in a reinforcement learning system.



## Environment:

The context or setting in which the agent operates and interacts in a reinforcement learning system.



## States (S):

A computer program designed to simulate conversation with human users, especially over the Internet.

## Actions (a):

Extremely large, and complex datasets that cannot be easily managed, or processed using traditional data processing applications.