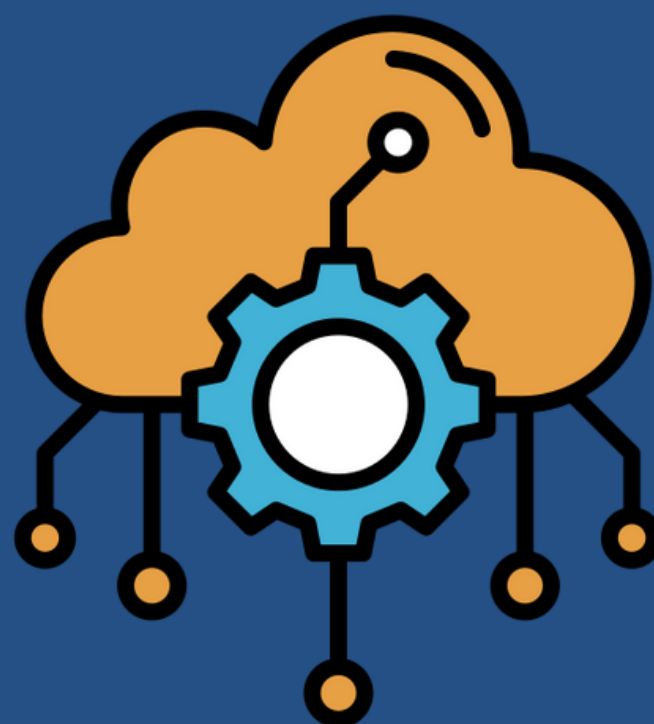


**SOCIALIZE SOME  
KEYWORDS OF THE  
READING "THE NIST  
DEFINITION OF CLOUD  
COMPUTING".**

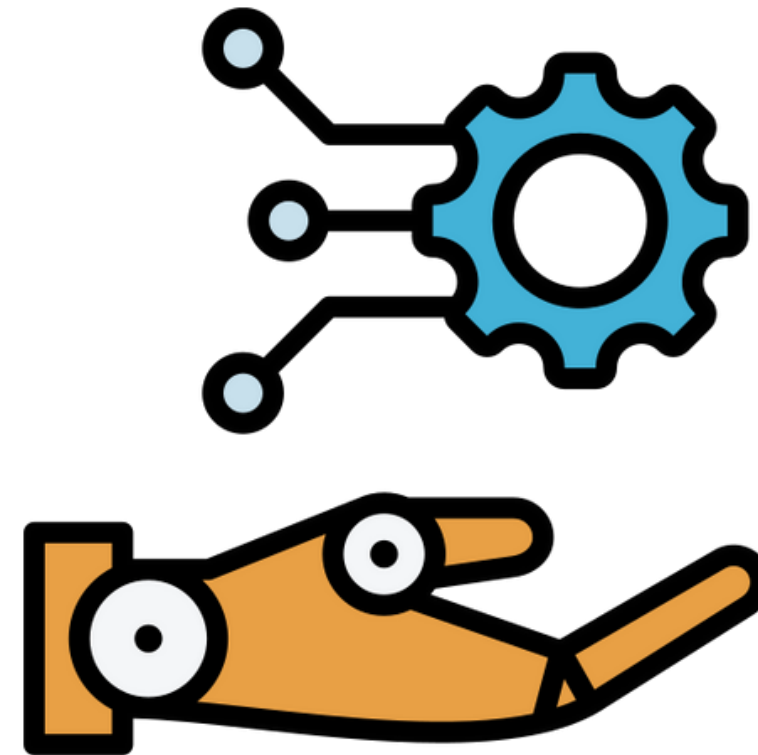


## CLOUD COMPUTING:

**A BUSINESS MODEL THAT PROVIDES UBIQUITOUS, CONVENIENT, ON-DEMAND NETWORK ACCESS TO A SHARED POOL OF CONFIGURABLE COMPUTING RESOURCES.**

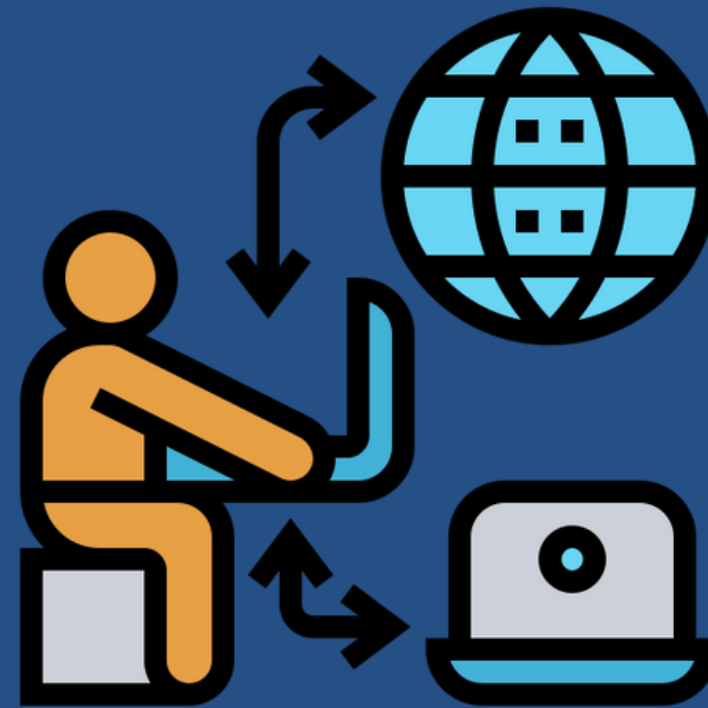


**NATIONAL INSTITUTE OF STANDARDS AND TECHNOLOGY, WHICH  
PUBLISHED THE OFFICIAL DEFINITION OF CLOUD COMPUTING.**



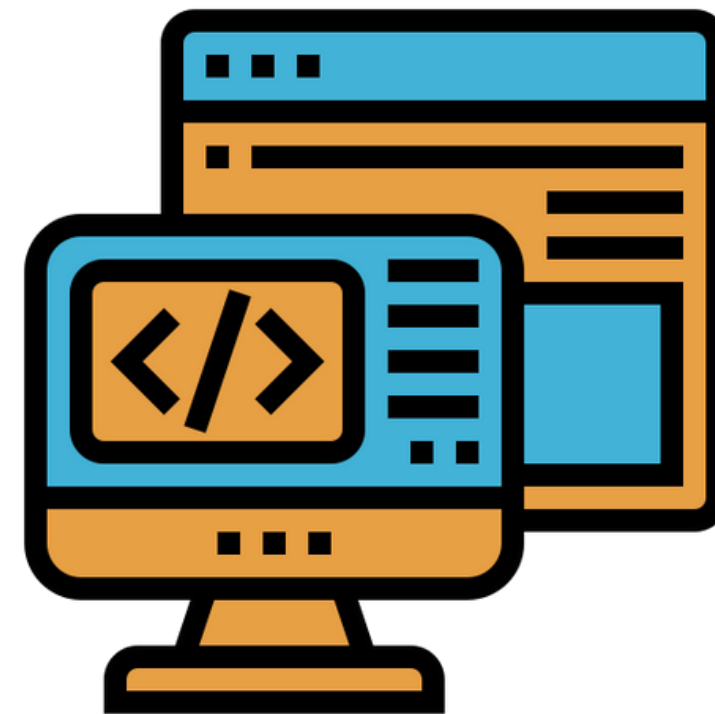
**UBIQUITOUS:**

- **EXISTING OR BEING EVERYWHERE AT THE SAME TIME; CONSTANTLY ENCOUNTERED.**



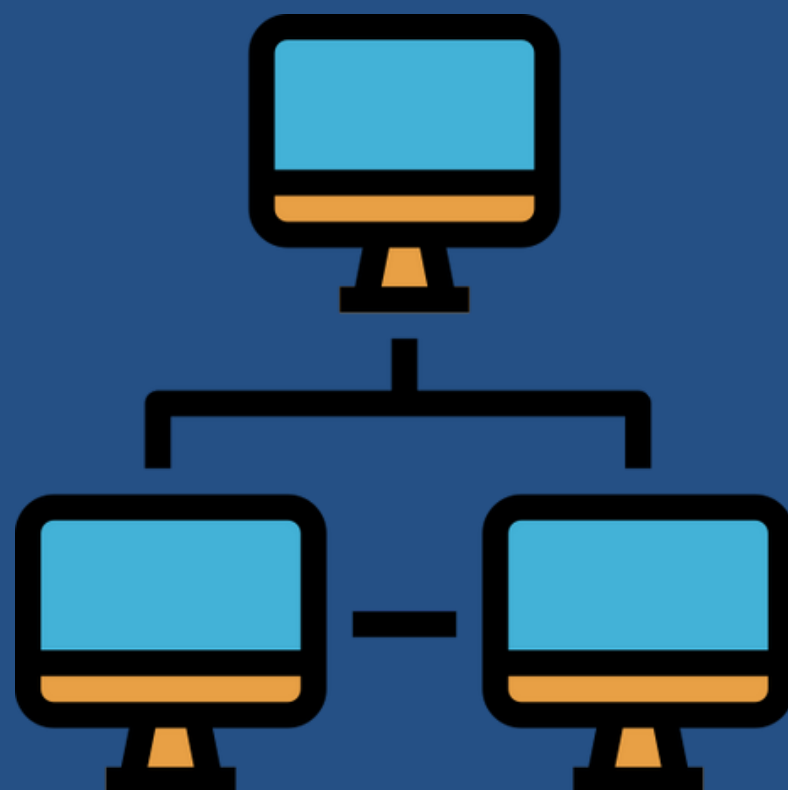
**ON-DEMAND SELF-SERVICE:**

**THE ABILITY TO PROVISION COMPUTING RESOURCES AUTOMATICALLY  
WITHOUT REQUIRING HUMAN INTERVENTION FROM THE SERVICE  
PROVIDER.**



## BROAD NETWORK ACCESS:

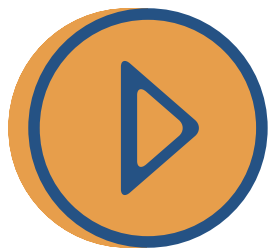
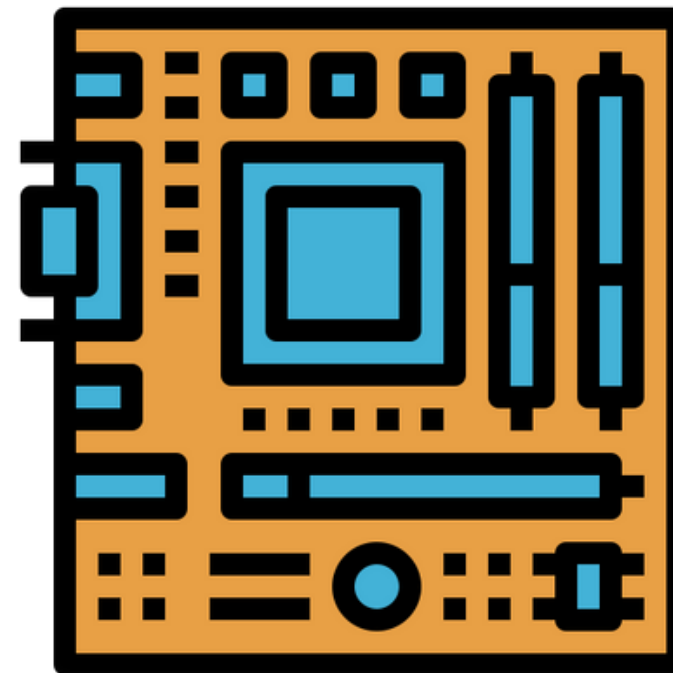
**THE CAPABILITY TO ACCESS CLOUD SERVICES OVER THE NETWORK  
THROUGH VARIOUS DEVICES AND PLATFORMS.**



## RESOURCE POOLING:



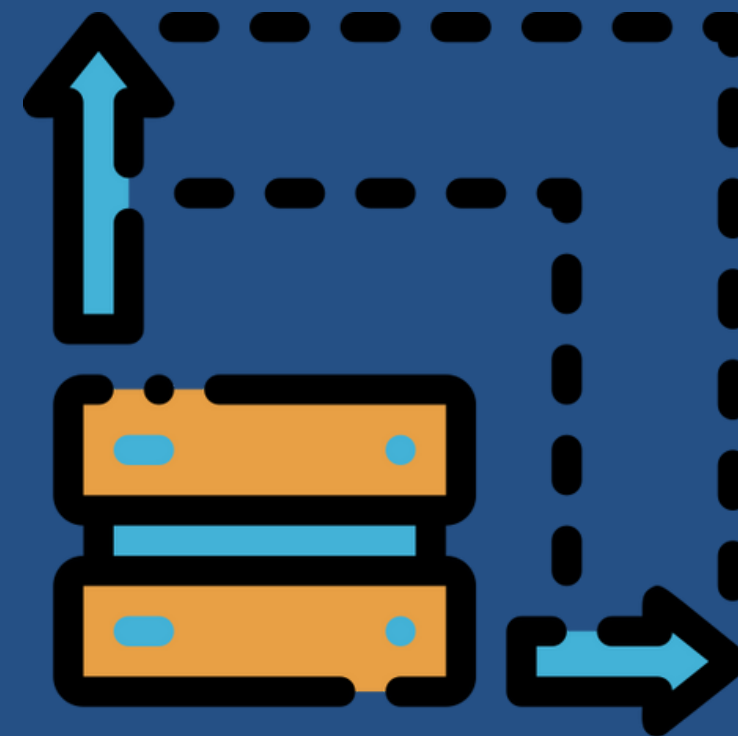
**THE AGGREGATION OF COMPUTING RESOURCES TO SERVE MULTIPLE CONSUMERS, ALLOWING RESOURCES TO BE DYNAMICALLY ASSIGNED AND REASSIGNED ACCORDING TO DEMAND.**





## RAPID ELASTICITY OR EXPANSION:

**THE ABILITY TO QUICKLY SCALE COMPUTING RESOURCES UP OR DOWN TO MEET CHANGING WORKLOAD DEMANDS.**





**MEASURED SERVICE:**

**CLOUD COMPUTING RESOURCES ARE MONITORED, CONTROLLED, AND REPORTED, PROVIDING TRANSPARENCY FOR BOTH THE PROVIDER AND THE CONSUMER REGARDING RESOURCE USAGE.**



## SERVICE MODELS:

**CATEGORIES OF CLOUD SERVICES, INCLUDING SOFTWARE, PLATFORM, AND INFRASTRUCTURE, EACH OFFERING DIFFERENT LEVELS OF ABSTRACTION AND MANAGEMENT RESPONSIBILITY.**



**DEPLOYMENT MODELS:**

**DIFFERENT WAYS OF DELIVERING CLOUD SERVICES,  
INCLUDING PRIVATE, COMMUNITY, PUBLIC, AND  
HYBRID CLOUDS, EACH CATERING TO SPECIFIC  
ORGANIZATIONAL NEEDS AND PREFERENCES.**

