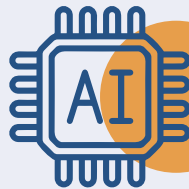


### Generative AI:

An advanced form of artificial intelligence that focuses on creating human-like outputs, such as text, images, or other creative works. It is highlighted in the text as a technology that is becoming more human in nature.



### Spatial Computing:

A technology that enables the processing and representation of data in both physical and digital environments. It involves creating immersive 3D spaces by extending the traditional 2D physical worlds, as mentioned in the study.



### AI Agent Ecosystems:

An interconnected network of AI-powered agents that work on behalf of individuals and organizations. These agents not only provide assistance and advice but also take decisive actions in both physical and digital realms, contributing to collective performance and value generation.



### Human-Machine Interaction:

A new human interface facilitated by innovative technologies like AI-enabled wearables, brain-sensing neurotechnology, and eye/motion tracking. It aims to better understand human behaviors and intentions, leveraging this knowledge to enhance the way people work and live.



### Humanized Technology:

Refers to the evolving approach of making technology more human-like and user-friendly. The study emphasizes that as technologies, especially generative AI, become more human-centric, they will be easier to interact with and seamlessly integrate into daily lives, unlocking new levels of human potential.