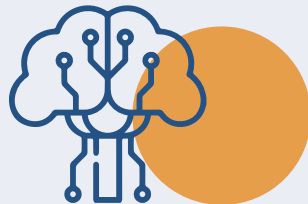


Artificial Intelligence (AI):

The simulation of human intelligence processes by machines, especially computer systems, involving tasks such as learning, reasoning, problem-solving, and decision-making.



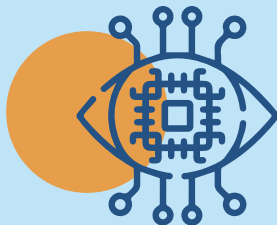
Machine Learning:

A subset of AI that involves the use of algorithms to enable machines to learn from data and improve their performance on a specific task without explicit programming.



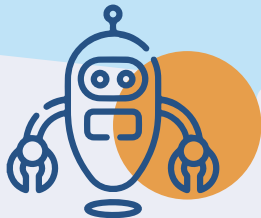
Natural Language Processing (NLP):

A branch of AI that focuses on the interaction between computers and human language, enabling machines to understand, interpret, and generate human-like text.



Computer Vision:

An area of AI that enables machines to interpret and understand visual information from the world, allowing them to analyze and make decisions based on visual input.



Robotics:

The interdisciplinary field that combines computer science and engineering to design, construct, operate, and use robots, often integrated with AI capabilities for intelligent decision-making and actions.